

NATIONAL LEAVE THE OFFICE EARLY DAY



NATIONAL LEAVE THE OFFICE EARLY DAY

All work and no play is a proven recipe for disaster but one that can be avoided to the benefit of both employee and employer.

Happy workers are productive workers, and greater productivity means greater profits and rewards for all.

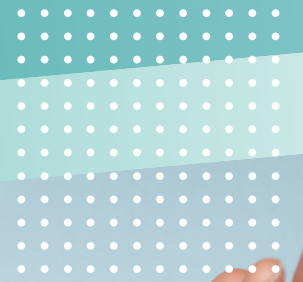
Hopefully leaving the office today having accomplished your work in less time will give employer and employee a taste of what you have both been missing.



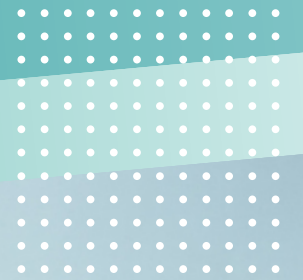
WHY WE LOVE NATIONAL LEAVE THE OFFICE EARLY DAY?



**IT GIVES US A TASTE
OF WHAT WE HAVE
BEEN MISSING**



**IT REMINDS US THAT
THERE IS MORE TO
LIFE THAN WORK**



WE AVOID AFTERNOON RUSH HOUR TRAFFIC

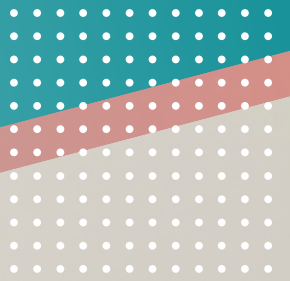


3

WAYS TO BE MORE PRODUCTIVE AT WORK



**PLAN YOUR
TOMORROW,
TODAY!**



COMPLETE ONE TASK BEFORE BEGINNING THE NEXT



GET A GOOD NIGHT'S REST





NATIONAL LEAVE THE OFFICE EARLY DAY



1stchoicestaffing.com